

Manly Vale Vacation Care



Important Information

General Information

Vacation Care is an additional service that is provided for families during the school holiday period. It is available for families that attend Manly Vale Public School as well as families from other schools. The program consists of a range of in-centre activities and excursions tailored for specific year groups.

What to Bring

Children should bring:

- **Healthy morning tea & lunch** (unless specified that lunch is provided on the program) - *Note: Due to children with anaphylaxis, Sustainable OSHC strives to be free from products containing nuts. Parents/guardians are asked to use caution when packing their child's lunchbox & avoid peanut butter, nutella or foods containing nuts.*
- **A sun hat & a raincoat**
- **A refillable drink bottle**
- **Spare clothes** (including underwear) in case there are any accidents.

Always mark belongings with your child's full name. Any belongings brought to the centre by your child remain the sole responsibility of the child & family. Sustainable OSHC take no responsibility for lost, stolen or broken items. Any clothing left at the end of Vacation Care will be donated to St Vincent De Paul.

What to Wear

Please ensure your child is wearing comfortable clothes that offer maximum sun protection including **a hat** and a top that **covers the shoulders**. Enclosed shoes that are suitable for walking and playing should be worn; thongs and sandals are impractical. Sunscreen should be applied to your child every day before dropping them to Vacation Care and will be reapplied throughout the day as necessary.

Food Provided

- Breakfast is available for children who arrive between 7:00am-8:00am and consists of Toast, Cereal & Fresh Fruit.
- Afternoon Tea is provided during Vacation Care and is served at 3:00pm. Afternoon Tea consists of Fresh Fruit & Sandwiches & a "special" snack i.e. Spaghetti Bolognese, Fried Rice, Banana Bread, Butter Chicken.
- In some circumstances, Lunch may be provided as part of the programmed activity. Please refer to the Vacation Care program as to whether lunch is provided.
- Due to children with anaphylaxis, Sustainable OSHC strives to be free from products containing nuts. No products containing or having traces of nuts will be used by Sustainable OSHC.

Hours of Operation

Vacation Care hours - 7:00am to 6:00pm

Pick up after 6:00pm incurs a late fee of \$16.50 per every 15mins or part thereof. Normal delivery and collection procedures apply.

Excursion Day Timing & Transport

- Children will generally leave the centre for excursions at 9:30am. Please ensure your child is at the centre by 9am for a briefing session prior to the excursion.
- In general, children will return back to the centre from excursions between 2:00pm - 3:00pm.
- Bus departure/return times are available on the Vacation Care Program, Risk Assessments & on the My Family Lounge App. Please read them carefully so your child does not miss the excursion.
- Please refer to the Vacation Care Program to identify the means of transportation for the excursion i.e (Chartered Bus, Walking, Ferry, Public Transport).
- The charter buses used for excursions are driven by a hired bus driver from the supplying bus company with full insurance.

Risk Assessments and Staff Ratios

Risk assessments are conducted for each for each activity & excursion to ensure safety standards are upheld at all times, these assessments are available for viewing upon request.

Staff to child ratio is:

- Onsite = 1:15
- Offsite (excursion) = 1:8
- Excursions involving water e.g. swimming = 1:5

The number of children going on each excursion can vary, the maximum number of children & anticipated number of children for excursions will be listed on the Vacation Care Program.

Waivers

For some excursions families will be required to complete a waiver form.

Changes to Planned Program

There may be occasions where the planned program must be changed due to weather conditions or the illness of an instructor. Families will be notified at earliest convenience.

Cost Breakdown

Base Day rate = \$75.50 per student; plus
Variable Daily Activity cost eg. \$75.50 + \$15 = \$90.50
An Administration Fee of \$22 is payable by all families on an annual basis at the time of enrolment.

Manly Vale Vacation Care



Terms & Conditions

Booking and Payment Policy

All Vacation Care Bookings must now be requested via the Xplor Home App.

Please use the Xplor Home App to find the bookings tab and book into the appropriate sessions labelled "Vacation Care Kindy, "Vacation Care 1-2" or "Vacation Care 3-6" where you will be able to book each child in for the days requested. Please refer to the [Casual Booking Instructions](#) if you require assistance. **When a solid orange circle is displayed above, your child is successfully booked in for that day.**

Changes or cancellations will be accepted up until **2 weeks prior to your booking and must be requested via Email.**

If the day is fully booked, you may request a space via the Xplor Home App and will be automatically added to the waitlist. **Please do not try and book your child into the other group.**

Direct debits are processed fortnightly for bookings 2 weeks in advance.

Cancellation Policy

Changes or cancellations will be accepted until **2 weeks prior to your booking.** Please ensure you cancel the session via email notification to Koolkuna OSHC. Thereafter no changes or cancellations can be accepted without a Medical Certificate.

Waitlist Policy

If your child has been added to the waitlist and a place becomes available, Manly Vale will contact you via email and book your child in under the assumption you still require care. It is the responsibility of the parent/guardian to advise Manly Vale immediately if you no longer require the care and wish to cancel the booking, which will enable us to offer the place to the next child on the waitlist.

Additional Needs & Inclusion Support

Children who require additional support are welcomed at Vacation Care once ISP funding is approved and appropriate staffing is available to meet their needs. Once ISP funding is approved, to help us plan effectively and ensure a safe, inclusive environment, families are asked to provide at least 3 weeks' notice of their specific bookings prior to the vacation care period.

Authorisation

By booking my child into Sustainable OSHC Vacation Care via the Xplor Home App, I hereby give consent for the child/ren booked into the Vacation Care program to attend the prescribed activities/excursions on the days they have been booked in.

I have access to & have read all the necessary information available in the Risk Assessments, Policies & Vacation Care Program prior to booking my child/ren in for Vacation Care as it contains the following regulatory information for excursions:

- (a) the child's name; and
- (b) the reason the child is to be taken outside the premises; and
- (c) the date the child is to be taken on the excursion; and
- (d) a description of the proposed destination for the excursion; and
- (e) if the excursion involves transporting children -
 - (i) the means of transport; and
 - (ii) any requirements for seatbelts or safety restraints under a law of each jurisdiction in which the children are being transported; and
- (f) the proposed activities to be undertaken by the child during the excursion; and
- (g) the period the child will be away from the premises; and
- (h) the anticipated number of children likely to be attending the excursion; and
- (i) the anticipated ratio of educators attending the excursion to the anticipated number of children attending the excursion; and
- (j) the anticipated number of staff members and any other adults who will accompany and supervise the children on the excursion; and
- (k) that a risk assessment has been prepared and is available at the service.

By clicking confirm booking, you are agreeing to these terms, if any questions please email Manly Vale OSHC.

Manly Vale Vacation Care

Program - Week 1 | Autumn 2026



= Travelling by Bus = Walking Excursion = Travelling by Ferry = Travelling via Public Transport

Kindy

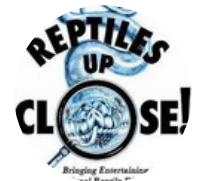
Monday 6/4

Manly Vale OSHC Closed Public Holiday

Tuesday 7/4

Reptiles Up Close

Come face-to-face with amazing reptiles in a high-energy wildlife adventure, brought to us by the Reptiles Up Close team. Watch snakes flick their tongues, see lizards dash like lightning, spot turtles showing off their shiny shells and frogs leaping with incredible skill. You'll even get the chance to interact with a crocodile up close. The whole day is packed with jaw-dropping facts, wild surprises and unforgettable moments.



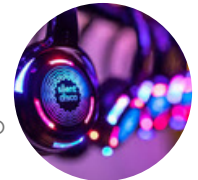
Max: 30 - Ratio: 1:15
In Centre

\$95

Wednesday 8/4

Silent Disco

Pop on wireless headphones and dive into a high-energy, noise-free dance party where every beat feels like your own. Switch between music channels, take on fun dance challenges. Make the whole space come alive. It's an exciting, unforgettable Silent Disco experience that keeps you dancing from start to finish.



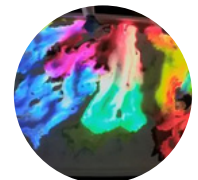
Max: 30 - Ratio: 1:15
In Centre

\$90

Thursday 9/4

Glow Art

Step into a world that lights up as you create glowing, neon masterpieces under UV lights. Cover yourself in bright face paint, use bold fluorescent colours and make eye-popping glow-in-the-dark crafts that shine, shimmer and pop with energy. It's an art experience that turns everything you touch into something brilliantly bright.



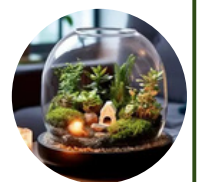
Max: 30 - Ratio: 1:15
In Centre

\$85

Friday 10/4

Nature And Botanicals

Come along for a nature-filled day and explore the outdoors and create plant-themed projects. Make your own seasonal dried flower wreath, build a terrarium with tiny plants, and put together an indoor plant kit to take home. It's a hands-on, creative experience perfect for little makers and plant lovers who want to bring a bit of nature inside.



Max: 30 - Ratio: 1:15
In Centre

\$85

Manly Vale Vacation Care

Program - Week 2 | Autumn 2026



= Travelling by Bus = Walking Excursion = Travelling by Ferry = Travelling via Public Transport

Kindy

Monday 13/4

Obstacle Course

Ready, set, GO! Build and conquer your very own obstacle courses. Crawl through tunnels, balance your way across tricky challenges, race through relays and take on big team moments that keep the energy high. You'll climb, crawl, jump and cheer your way through a full day of creativity, movement and epic adventure.



Max: 30 - Ratio: 1:15
In Centre

\$80

Tuesday 14/4

Koori Kinnections

Celebrate culture, community and connection as you dive into activities that explore Aboriginal heritage through storytelling, art and meaningful traditions brought to us by Koori Kinnections. With creative workshops and engaging cultural experiences, it's a vibrant day of learning, making and connecting in a way that feels fun, respectful and full of heart.



Max: 30 - Ratio: 1:15
In Centre

\$90

Wednesday 15/4

Playdough and Splatter Paint

Squish it, roll it, splatter it as you dive into a colourful sensory adventure. Play with bright, squishy playdough. Splash into creative splatter art that pops with colour and movement. It's a day of imagination, messy play and big smiles – so dress for mess and get ready for a squishy, splashy, creative blast.



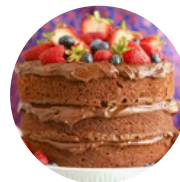
Max: 30 - Ratio: 1:15
In Centre

\$85

Thursday 16/4

Dessert Baking

Whisk, mix and decorate your way to something delicious as you join your friends in the kitchen. Bake fluffy cupcakes, create gooey caramel slice and make tasty cookies to take home, all while learning simple baking skills and adding your own creative flair with fun decorations. It's a sweet, messy, feel-good day of cooking and creativity.



Max: 30 - Ratio: 1:15
In Centre

\$85

Friday 17/4

PJ Slumber Party

Roll out of bed, stay snuggled in your comfiest pyjamas and head straight to Manly Vale for the ultimate all-day slumber-party celebration. Spend the day relaxing, playing and hanging out with friends, and enjoy classic fun, silly challenges, creative activities and plenty of chances to chill out together. And because no PJ party is complete without a feast, bring a snack to share and help create the most delicious snack table ever. It's comfort, fun and friendship all wrapped up in one big, cosy PJ Slumber Day.



Max: 30 - Ratio: 1:15
In Centre

\$80

Manly Vale Vacation Care

Program - Week 3 | Autumn 2026



= Travelling by Bus = Walking Excursion = Travelling by Ferry = Travelling via Public Transport

Kindy

Monday 20/4

Wheels Day

Hop on your bike or scooter and dive into a fast-paced day of riding challenges, obstacle courses and outdoor fun. You'll cruise around the school grounds, sharpen your safe-riding skills and team up with friends for big, energetic moments. With plenty of time to ride, race and explore, it's the perfect adventure for movement, confidence and pure excitement. **Remember to bring your bikes or scooters and helmets.**



Max: 30 - Ratio: 1:15
In Centre

\$80

Tuesday 21/4

Air Dry Clay

Bring your imagination to life as you sculpt unique creations, play with fun textures and craft one-of-a-kind clay keepsakes to take home. From cute characters to cool, creative designs, the possibilities are endless. It's a hands-on day bursting with creativity, messy fun and clay-filled masterpieces you'll be proud of.



Max: 30 - Ratio: 1:15
In Centre

\$85

Wednesday 22/4

Back To School Term 2