



Koolkuna Vacation Care

Important Information

General Information

Vacation Care is an additional service that is provided for families during the school holiday period. It is available for families that attend Balgowlah North Public School as well as families from other schools. The program consists of a range of in-centre activities and excursions tailored for specific year groups.

What to Bring

Children should bring:

- **Healthy morning tea & lunch** (unless specified that lunch is provided on the program) - *Note: Due to children with anaphylaxis, Sustainable OSHC strives to be free from products containing nuts. Parents/guardians are asked to use caution when packing their child's lunchbox & avoid peanut butter, nutella or foods containing nuts.*
- **A sun hat & a raincoat**
- **A refillable drink bottle**
- **Spare clothes** (including underwear) in case there are any accidents.

Always mark belongings with your child's full name. Any belongings brought to the centre by your child remain the sole responsibility of the child & family. Sustainable OSHC take no responsibility for lost, stolen or broken items. Any clothing left at the end of Vacation Care will be donated to St Vincent De Paul.

What to Wear

Please ensure your child is wearing comfortable clothes that offer maximum sun protection including **a hat** and a top that **covers the shoulders**. Enclosed shoes that are suitable for walking and playing should be worn; thongs and sandals are impractical. Sunscreen should be applied to your child every day before dropping them to Vacation Care and will be reapplied throughout the day as necessary.

Food Provided

- Breakfast is available for children who arrive between 7:00am-8:00am and consists of Toast, Cereal & Fresh Fruit.
- Afternoon Tea is provided during Vacation Care and is served at 3:00pm. Afternoon Tea consists of Fresh Fruit & Sandwiches & a "special" snack i.e. Spaghetti Bolognese, Fried Rice, Banana Bread, Butter Chicken.
- In some circumstances, Lunch may be provided as part of the programmed activity. Please refer to the Vacation Care program as to whether lunch is provided.
- Due to children with anaphylaxis, Sustainable OSHC strives to be free from products containing nuts. No products containing or having traces of nuts will be used by Sustainable OSHC.

Hours of Operation

Vacation Care hours - 7:00am to 6:00pm

Pick up after 6:00pm incurs a late fee of \$15 per every 15mins or part thereof. Normal delivery and collection procedures apply.

Excursion Day Timing & Transport

- Children will generally leave the centre for excursions at 9:30am. Please ensure your child is at the centre by 9am for a briefing session prior to the excursion.
- In general, children will return back to the centre from excursions between 2:00pm - 3:00pm.
- Bus departure/return times are available on the Vacation Care Program & Risk Assessments. Please read them carefully so your child does not miss the excursion.
- Please refer to the Vacation Care Program to identify the means of transportation for the excursion i.e (Chartered Bus, Walking, Ferry, Public Transport).
- The charter buses used for excursions are driven by a hired bus driver from the supplying bus company with full insurance.

Risk Assessments and Staff Ratios

Risk assessments are conducted for each for each activity & excursion to ensure safety standards are upheld at all times, these assessments are available for viewing upon request.

Staff to child ratio is:

- Onsite = 1:15
- Offsite (excursion) = 1:8
- Excursions involving water e.g. swimming = 1:5

The number of children going on each excursion can vary, the maximum number of children & anticipated number of children for excursions will be listed on the Vacation Care Program.

Waivers

For some excursions families will be required to complete a waiver form.

Changes to Planned Program

There may be occasions where the planned program must be changed due to weather conditions or the illness of an instructor. Families will be notified at earliest convenience.

Cost Breakdown

Base Day rate = \$70 per student; plus
Variable Daily Activity cost eg. \$70 + \$15 = \$85
An Administration Fee of \$33 is payable by all families on an annual basis at the time of enrolment.



Koolkuna Vacation Care

Terms & Conditions

Booking and Payment Policy

All Vacation Care Bookings must now be requested via the Xplor Home App.

Please use the Xplor Home App to find the bookings tab and book into the appropriate sessions labelled "Vacation Care K-2" or "Vacation Care 3-6" where you will be able to book each child in for the days requested. Please refer to the [Casual Booking Instructions](#) if you require assistance. **When a solid orange circle is displayed above, your child is successfully booked in for that day.**

Changes or cancellations will be accepted up until **2 weeks prior to your booking and must be requested via Email.**

If the day is fully booked, you may request a space via the Xplor Home App and will be automatically added to the waitlist. **Please do not try and book your child into the other group.**

Direct debits are processed fortnightly for bookings 2 weeks in advance.

Cancellation Policy

Changes or cancellations will be accepted until **2 weeks prior to your booking.** Please ensure you cancel the session via email notification to Koolkuna OSHC. Thereafter no changes or cancellations can be accepted without a Medical Certificate.

Waitlist Policy

If your child has been added to the waitlist and a place becomes available, Koolkuna will contact you via email and book your child in under the assumption you still require care. It is the responsibility of the parent/guardian to advise Koolkuna immediately if you no longer require the care and wish to cancel the booking, which will enable us to offer the place to the next child on the waitlist.

COVID-19 Policy

In the event of a Lockdown resulting in the closure of the Centre, all bookings will be cancelled and fees refunded. In the event of a Lockdown in which the Centre continues to operate, families will be given 48 hours from notification to amend or cancel their bookings. This notice period also applies if there are any program changes resulting from Lockdown restrictions.

Authorisation

By booking my child into Sustainable OSHC Vacation Care via the Xplor Home App, I hereby give consent for the child/ren booked into the Vacation Care program to attend the prescribed activities/excursions on the days they have been booked in.

I have access to & have read all the necessary information available in the Risk Assessments, Policies & Vacation Care Program prior to booking my child/ren in for Vacation Care as it contains the following regulatory information for excursions:

- (a) the child's name; and
- (b) the reason the child is to be taken outside the premises; and
- (c) the date the child is to be taken on the excursion; and
- (d) a description of the proposed destination for the excursion; and
- (e) if the excursion involves transporting children -
 - (i) the means of transport; and
 - (ii) any requirements for seatbelts or safety restraints under a law of each jurisdiction in which the children are being transported; and
- (f) the proposed activities to be undertaken by the child during the excursion; and
- (g) the period the child will be away from the premises; and
- (h) the anticipated number of children likely to be attending the excursion; and
- (i) the anticipated ratio of educators attending the excursion to the anticipated number of children attending the excursion; and
- (j) the anticipated number of staff members and any other adults who will accompany and supervise the children on the excursion; and
- (k) that a risk assessment has been prepared and is available at the service.

By clicking confirm booking, you are agreeing to these terms, if any questions please email Koolkuna OSHC.

Koolkuna Vacation Care

Program - Week 1 | Autumn 2024



= Travelling by Bus (Seatbelts to be worn) = Walking Excursion = Travelling by Ferry = Travelling via Public Transport

Juniors (Years K-2)

Seniors (Years 3-6)

Monday 15/4

Collaroy Fish n Chips

We're exploring one of Sydney's beautiful northern beaches, Collaroy, for sandcastle building, beach games and playground action. We will also treat ourselves to a specialty lunch from the local Fish & Chipper!



Max: 40 - Ratio: 1:8
Bus Departure: 10:00am
Bus Return: 3:00pm

\$95

Mexican Fiesta

Buenos Dias everyone! Today we are travelling to Mexico where we will be exploring their culture through food, dance and art. We will be making Tacos, Quesadillas & Churros, our own maraca shakers and plenty more!



Max: 45 - Ratio: 1:15

\$80

Tuesday 16/4

Build a Bear

Today we will have the chance to bring a teddy bear to life and enjoy all things cuddly. Each bear will be stuffed with joy and a heart of love for us to bring home. What will you name your new friend? Spend the day playing musical teddies, we're going on a bear hunt & many more fun games!



Max: 60 - Ratio: 1:15

\$85

Footy Golf

Reckon you have what it takes to master the mix of golf and soccer combined? Let's head off to Penrith for the Ultimate Footy Golf tournament. Come and show us what you've got in this thrilling cross game.



Max: 32 - Ratio: 1:8
Bus Departure: 11:00am
Bus Return: 3:00pm

\$95

Wednesday 17/4

Pocket City Farm

Join us as we head off to Pocket City Farm; the first ever urban farm in the heart of Camperdown, Sydney. We will be learning how to use organic practices to grow vegetables, herbs and the fundamentals of sustainability.



Max: 40 - Ratio: 1:8
Bus Departure: 10:00am
Bus Return: 3:00pm

\$90

Medieval Mayhem

Hear-ye-hear-ye! Join Ben the Bard and Weapons-master Diana as they take you on a medieval experience like no other. Step into history and become kings, queens, knights and squires and discover, first hand, what life was like in the middle ages.



Max: 45 - Ratio: 1:15

\$85

Thursday 18/4

EduKickerz

Our friends at EduKickerz are coming down to Koolkuna to give us a soccer session. Not only will you learn an abundance of new skills but you'll be sure to leave feeling like an improved player. Now who doesn't want that?



Max: 60 - Ratio 1:15

\$80

Palm Beach Lighthouse Walk

Living on the Northern Beaches, you're sure to know about this walk! The Palm Beach Lighthouse walk is rewarding and enjoyable with some of the best views on the beaches. To celebrate completion, ice creams will be enjoyed afterwards!



Max: 32 - Ratio: 1:8
Bus Departure: 10:00am
Bus Return: 3:15pm

\$90

Friday 19/4

Wheels Day

Ride, Skate or Scoot on down to Koolkuna where we will be spending the day on our wheels around BNPS. Turning the school into our own racetrack, enjoying free riding as well as riding relay races! This day will be all about wheels!

BYO Bikes, Scooter, Skateboard, Rollerblades & Helmet



Max: 90 - Ratio: 1:15

\$75

Koolkuna Vacation Care

Program - Week 2 | Autumn 2024



= Travelling by Bus (Seatbelts to be worn) = Walking Excursion = Travelling by Ferry = Travelling via Public Transport

Juniors (Years K-2)

Seniors (Years 3-6)

Monday 22/4

Pizza Party

Ciao! Welcome to Koolkuna Pizzeria! You'll get to create your own pizza with an array of toppings including pepperoni, ham, cheese or even pineapple! Enjoy the delicious taste of your Italian meal!



Max: 60 - Ratio: 1:15

\$80

Sydney Zoo

Meet some iconic animals such as kangaroos, chimpanzees, wombats and tigers as we venture out to Sydney Zoo in Eastern Creek. Today will guarantee to leave a smile on your face.



Max: 32 - Ratio: 1:8
Bus Departure: 9:30am
Bus Return: 3:00pm

\$100

Tuesday 23/4

Ice Age Adventure

Explore the exciting world of the Ice Age and learn about the history of the icy prehistoric times at the Hurstville Museum. From Woolly Mammoths to Sabre Tooth Tigers, there's something for everyone!



Max: 40 - Ratio: 1:8
Bus Departure: 9:45am
Bus Return: 2:30pm

\$90

Drama Workshop

It's time to unleash your creativity through interactive storytelling and Improv games. It's time to become that daring hero and join us for a dramatic escape into a world of imagination



Max: 45 - Ratio: 1:15

\$75

Wednesday 24/4

Junior Inventors

This exciting STEM Workshop is going to focus on the fundamentals of coding, circuits and critical thinking through the use of Magblox Tiles and littleBits. Welcome to the world of innovation!

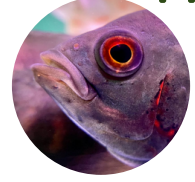


Max: 60 - Ratio: 1:15

\$85

Clifton Gardens Fishing

We're off for a day at the gorgeous Clifton Gardens in Mosman. We'll be enjoying park games and doing some fishing to wind down before the public holiday.



Max: 32 - Ratio: 1:8
Bus Departure: 10:30am
Bus Return: 3:00pm

\$90

Thursday 25/4

KOOLKUNA CLOSED
ANZAC Day

Friday 26/4

Anzac Day

ANZAC Day is an extremely significant day for Australians, as we recognise the importance of commemorating soldiers and, at the same time, promoting peace. Join us at Koolkuna as we honor the traditions of the ANZAC's. *Lest We Forget.*

Max: 90 - Ratio: 1:15



\$75

Koolkuna Vacation Care

Program - Week 3 | Autumn 2024



= Travelling by Bus (Seatbelts to be worn) = Walking Excursion = Travelling by Ferry = Travelling via Public Transport

Juniors (Years K-2)

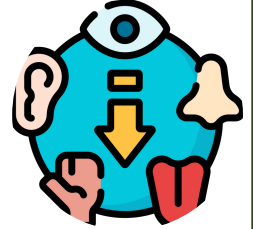
Seniors (Years 3-6)

Monday 29/4

5 Senses

Explore your senses as we spend the day using our senses of touch, taste, smell, sight and sound throughout a range of activities and experiments. Will you be able to guess what your touching or tasting?! Test your hearing and sight with games like What's that Song, Who am I, Spotlight and many more! Join us on this scientific adventure.

Max: 90 - Ratio: 1:15



\$75

Tuesday 30/4

K-6 Return to School